

# Puppy Dress Up

## Supplies you'll need



crayons



scissors



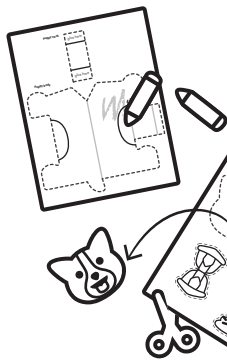
glue stick

**What do dogs and  
cellphones have in common?**

They both have collar ID!

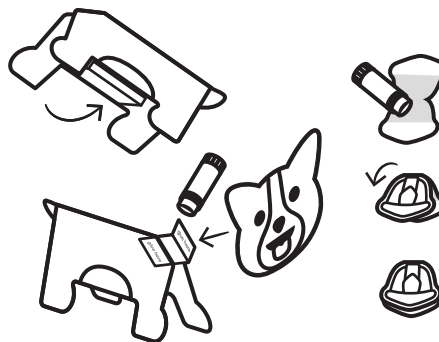


## Instructions



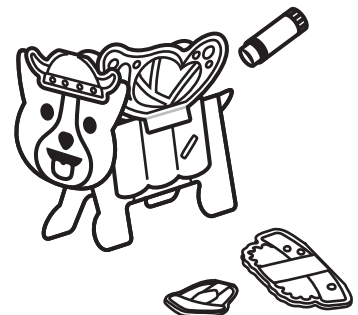
### 1. Color & cut

Print out the activity and color in all the pieces. Cut them out along the dotted line.



### 2. Assemble the puppy and hats

Fold the puppy body along the grey fold lines and glue the bottom tab to the opposite side of the body. Glue the neck to the inside of the puppy body, fold the end of the neck, then glue the puppy head to the neck. Apply glue to the middle part of the hats and fold in half, leaving an opening at the bottom.



### 3. Dress up!

Fold the costumes in half and place on the puppy's back. Wedge the hats on the puppy's head. Want wings? Add glue to the tabs and attach them to the puppy's back.



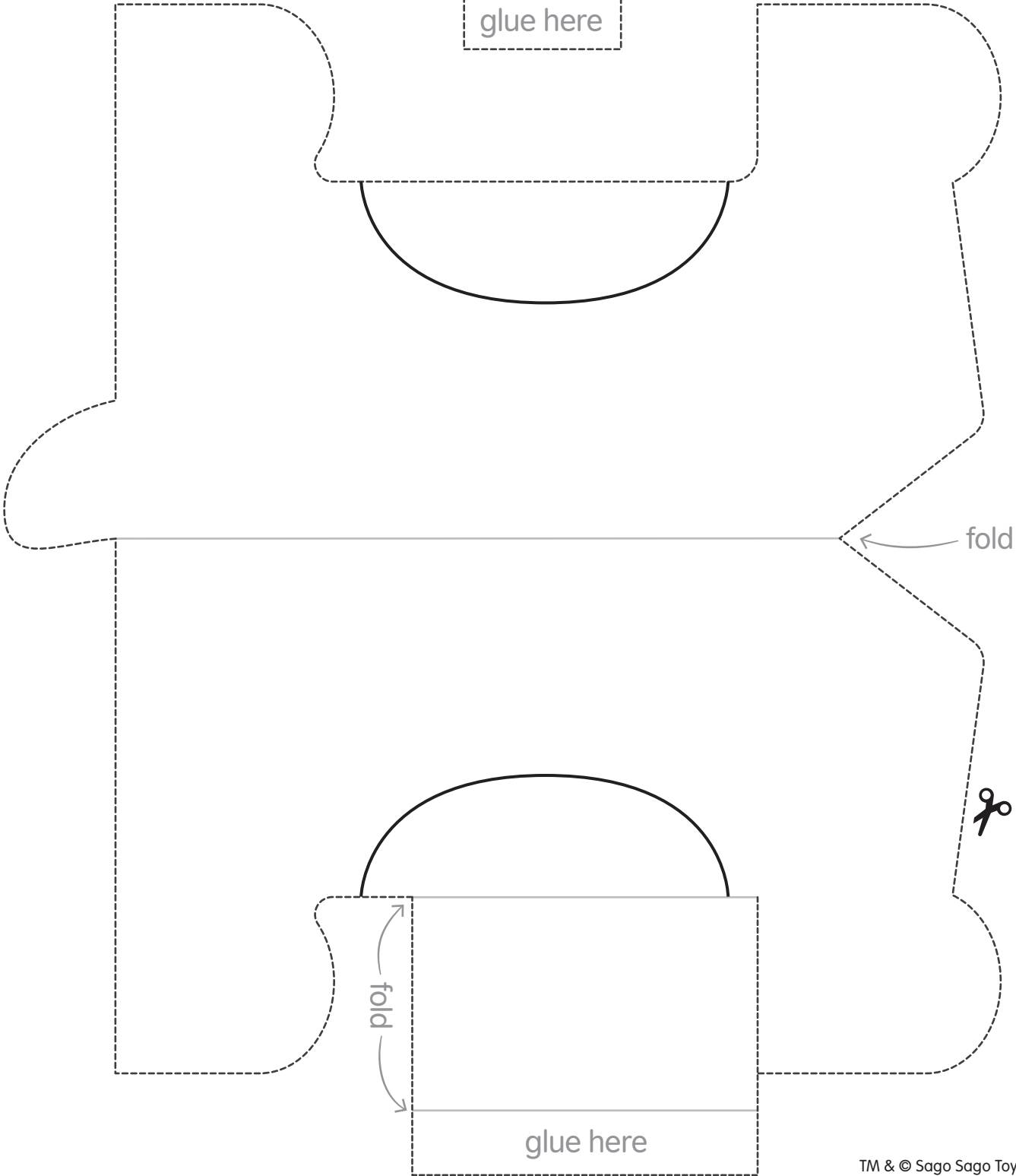
Scan the QR code  
or visit **sagomini.com**  
to discover more printables!

PUPPY NECK



fold

PUPPY BODY



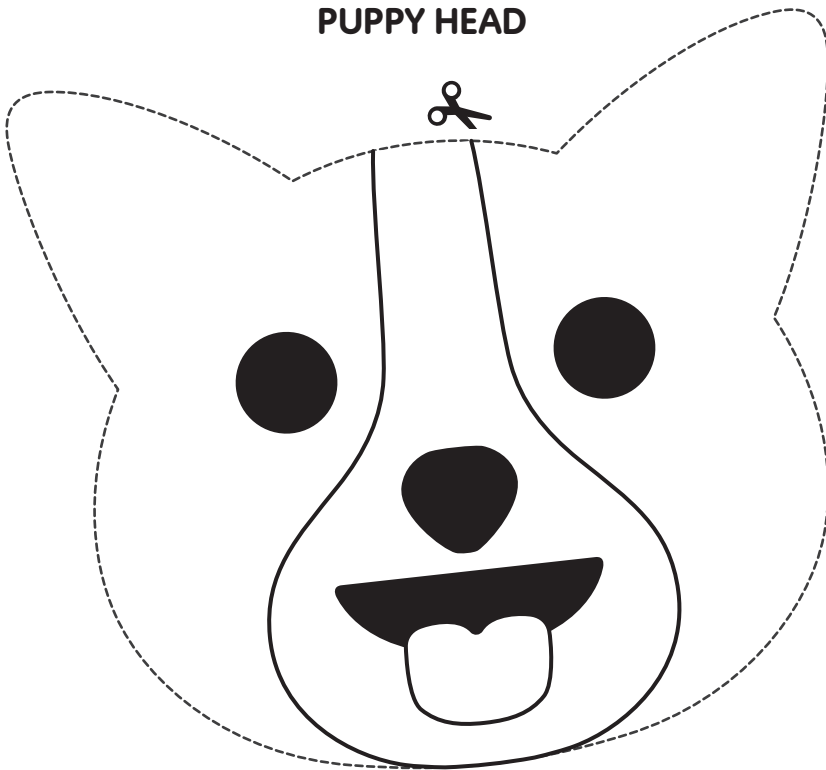
fold



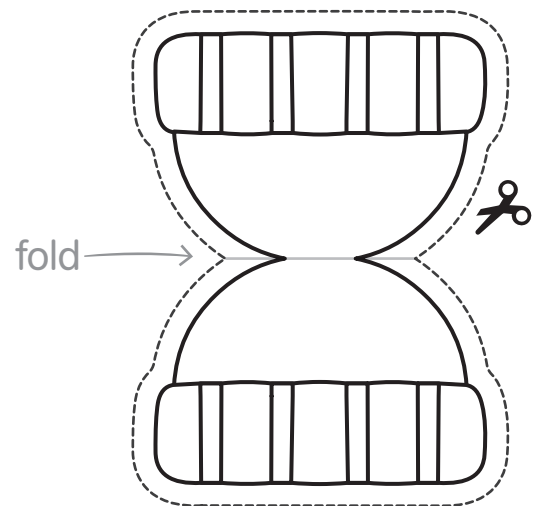
fold

glue here

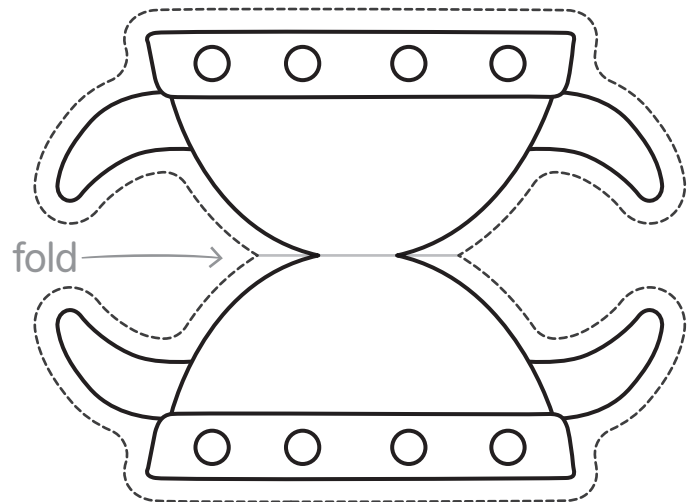
**PUPPY HEAD**



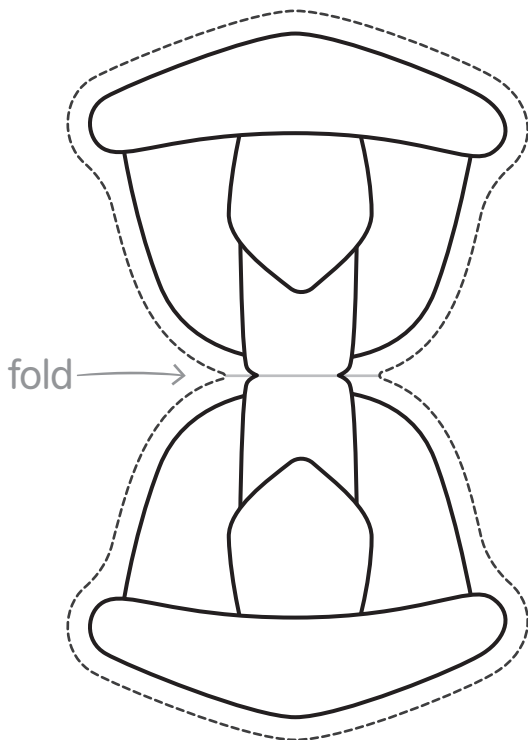
**TOQUE**



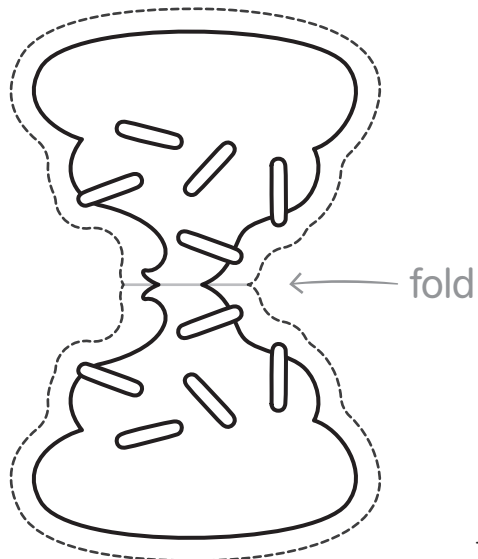
**VIKING HELMET**



**FIREFIGHTER HELMET**

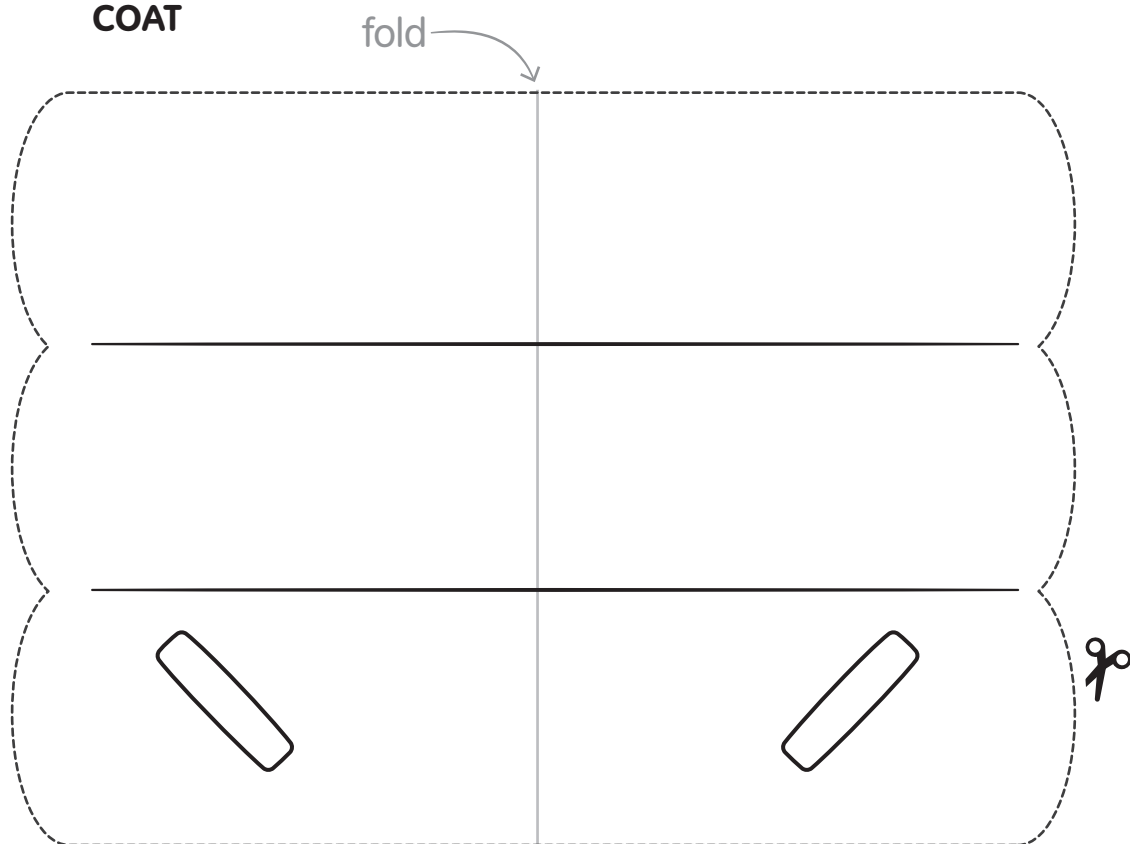


**WHIPPED CREAM AND SPRINKLES**

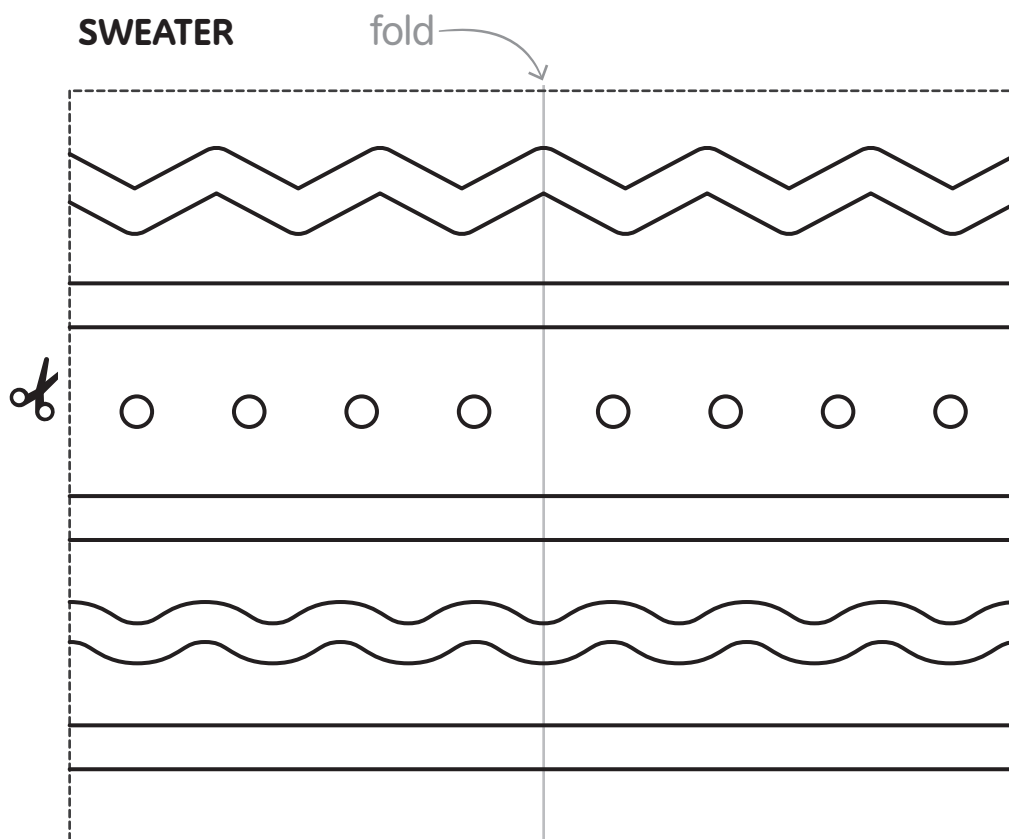


# COSTUMES

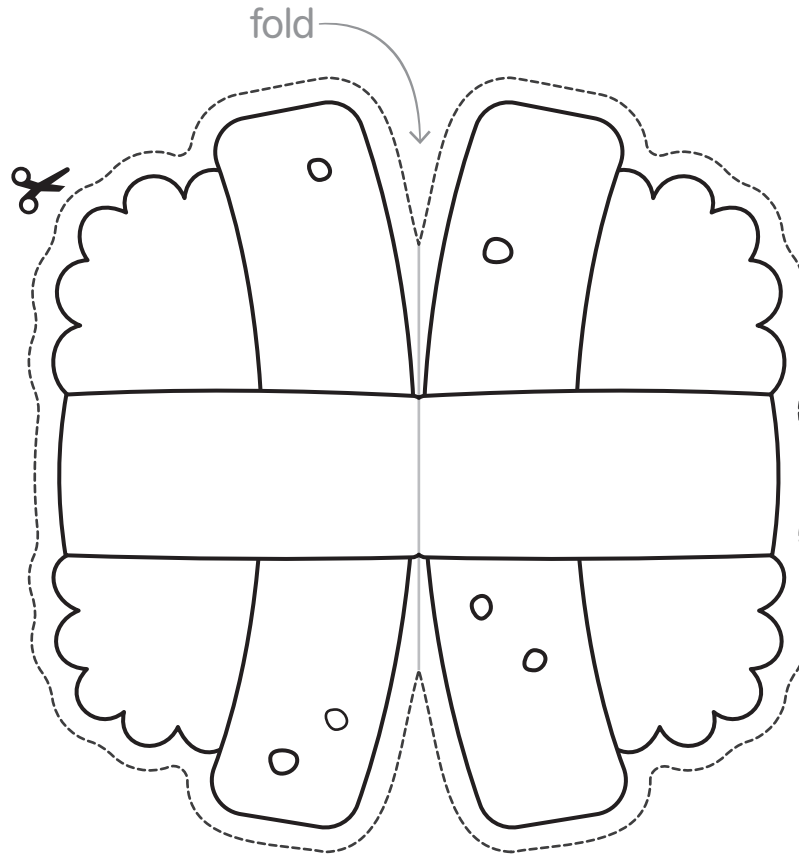
## COAT



## SWEATER



## SUSHI



## BUTTERFLY WINGS

