

# Lemonade Stand

## Supplies you'll need



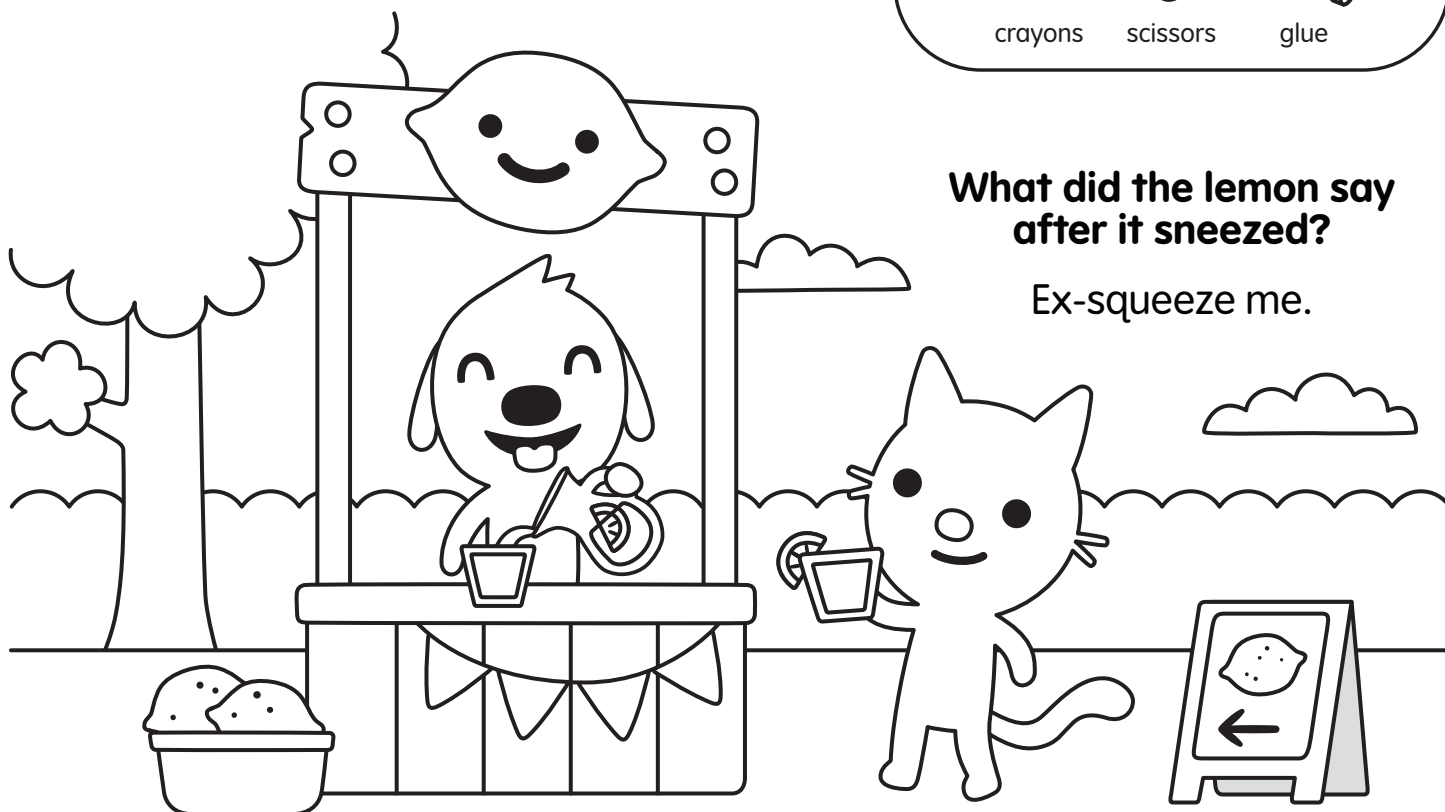
crayons



scissors



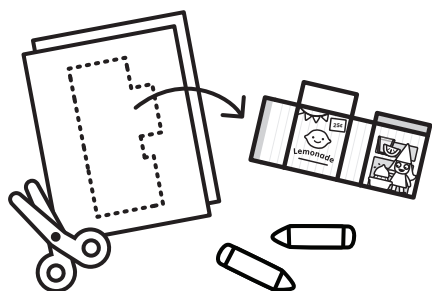
glue



**What did the lemon say  
after it sneezed?**

Ex-squeeze me.

## Instructions



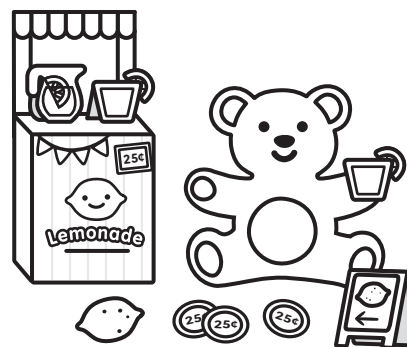
### 1. Color, cut and fold

Print out the activity and color it in. Cut out all the pieces along the dotted line, and fold along the gray line.



### 2. Assemble stand

Glue together bottom of the lemonade stand, then attach the top to the back of it.



### 3. Time for lemonade!

Set up the scene with all the pieces. Gather plush toys around the stand and serve lemonade to the customers!

----- cut line  
——— fold line



fold →

fold →

Glue here

↑ fold



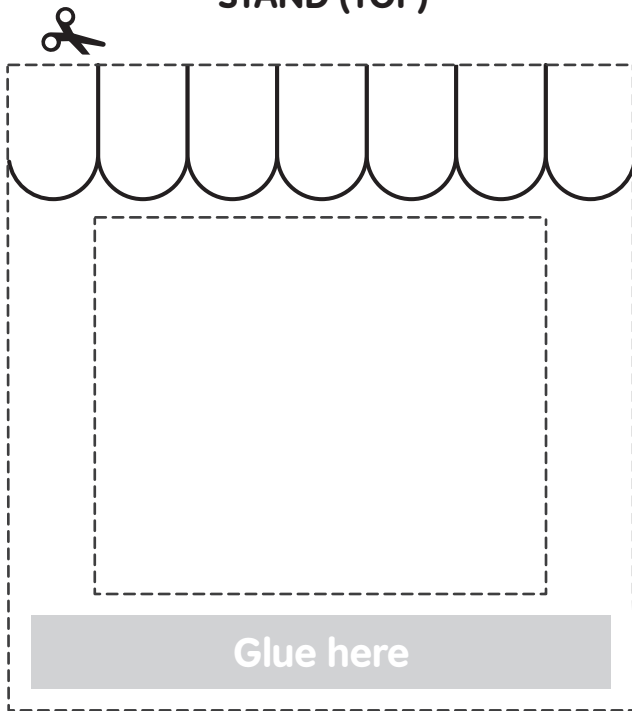
**fold**

Glue here

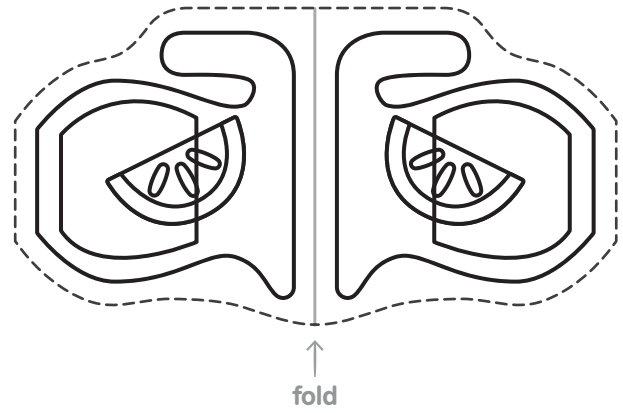
----- cut line

—— fold line

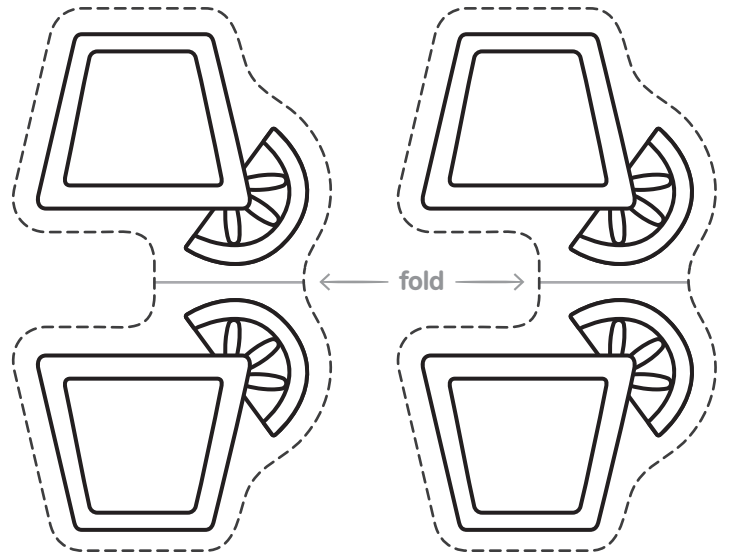
STAND (TOP)



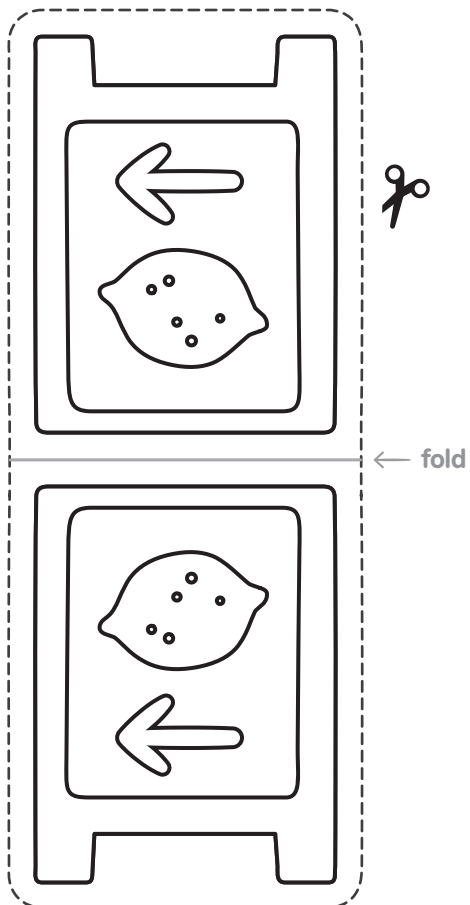
PITCHER



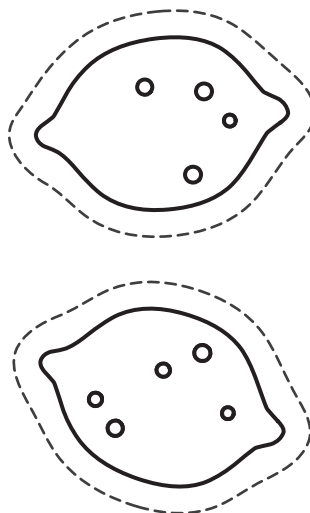
DRINK GLASSES



SIGN



LEMONS



MONEY

